

GASOMETER



EUREF *Event*★



GASOMETER

ICONIC. HISTORIC. IMPRESSIVE.

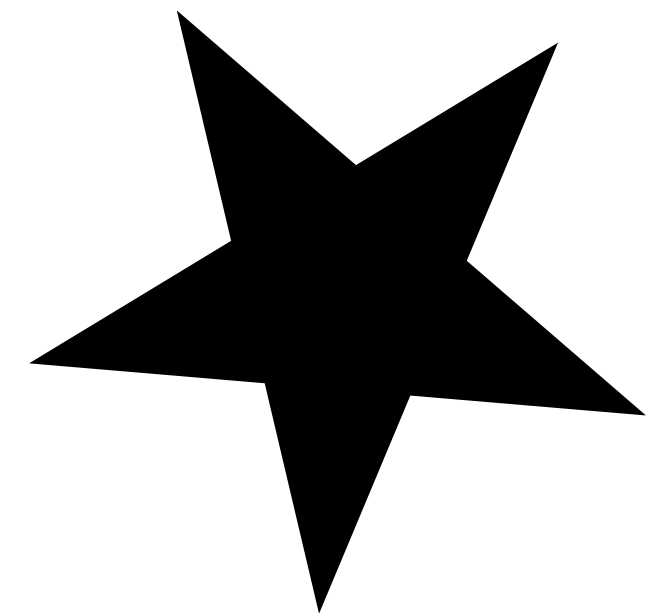
After 100 years, the heart of the EUREF-Campus is opening its doors once again: the **listed Gasometer** presents itself as a spectacular event location in industrial style - energy-efficient, architecturally unique and with a lot of history.

With around 2,700 m² on three floors, the Gasometer offers the perfect setting for conferences, receptions and evening events for up to 2,200 guests - and can be flexibly combined with other campus locations and spacious outdoor areas.

The **crowning highlight**: the 66-metre-high roof terrace with a 360° view over all of Berlin. The Gasometer - Berlin's new event icon.

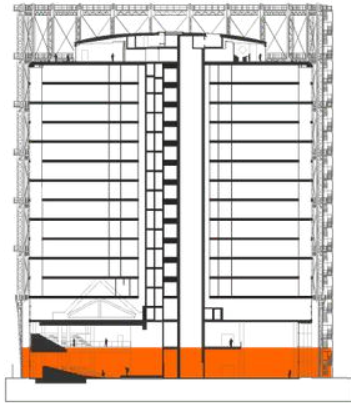
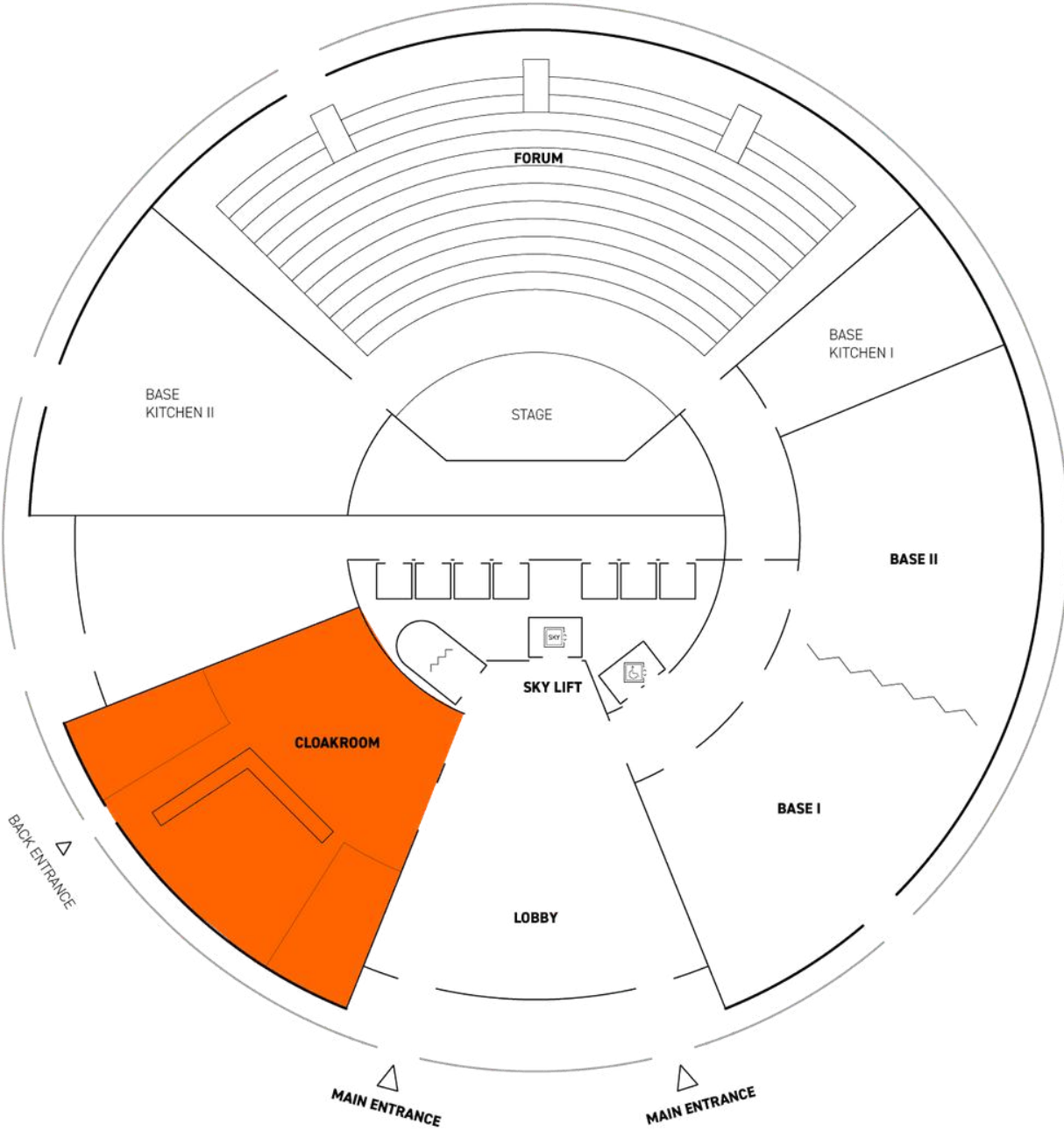
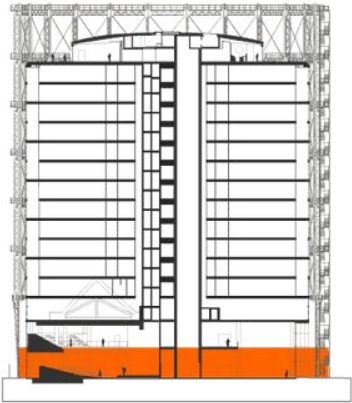
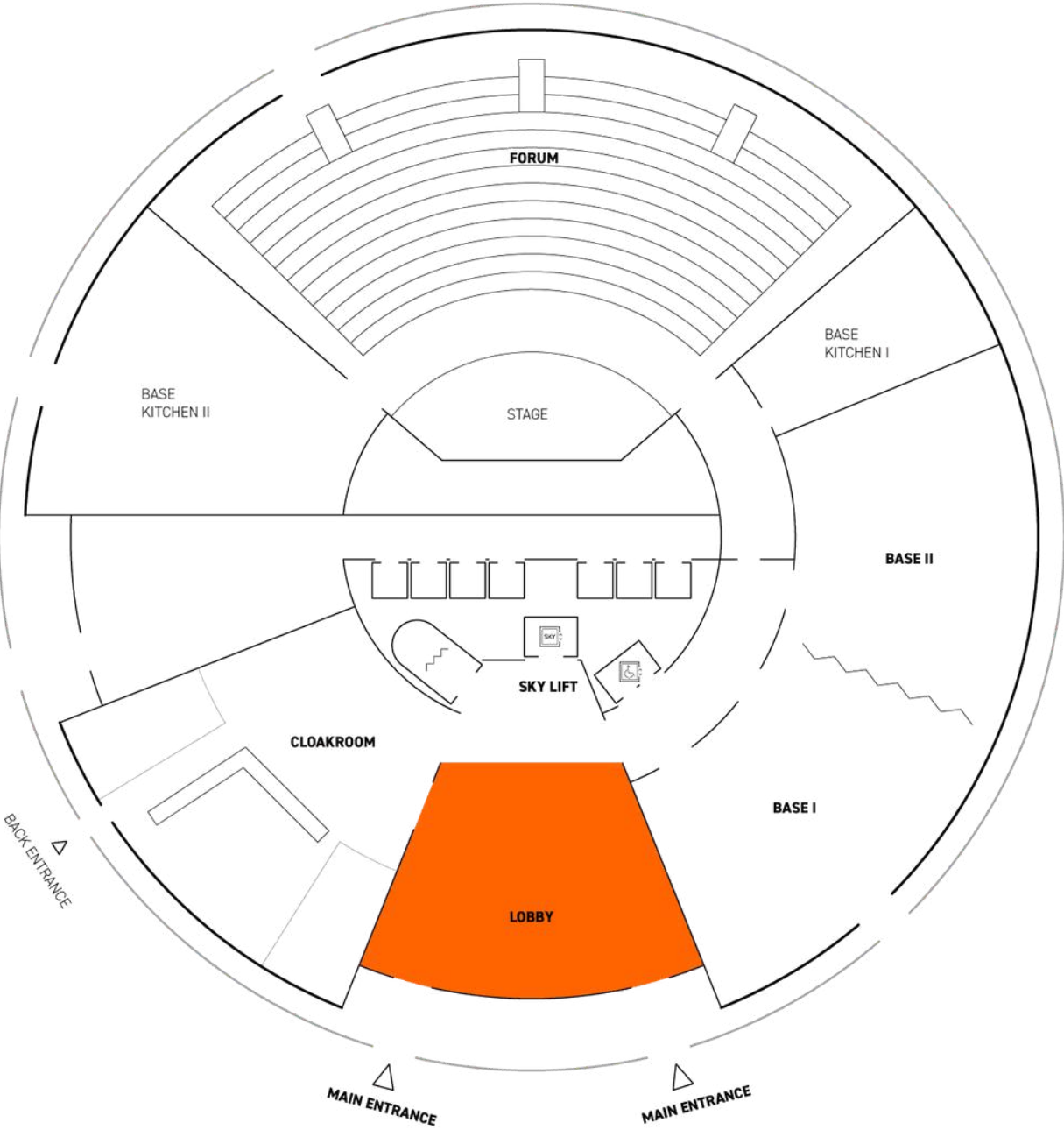
BENEFITS:

- > Movable elevating platforms in the FORUM
- > Immersive sound system L-ISA
- > SKY roof terrace at 66 meters



FLOOR PLANS & AREAS

GF

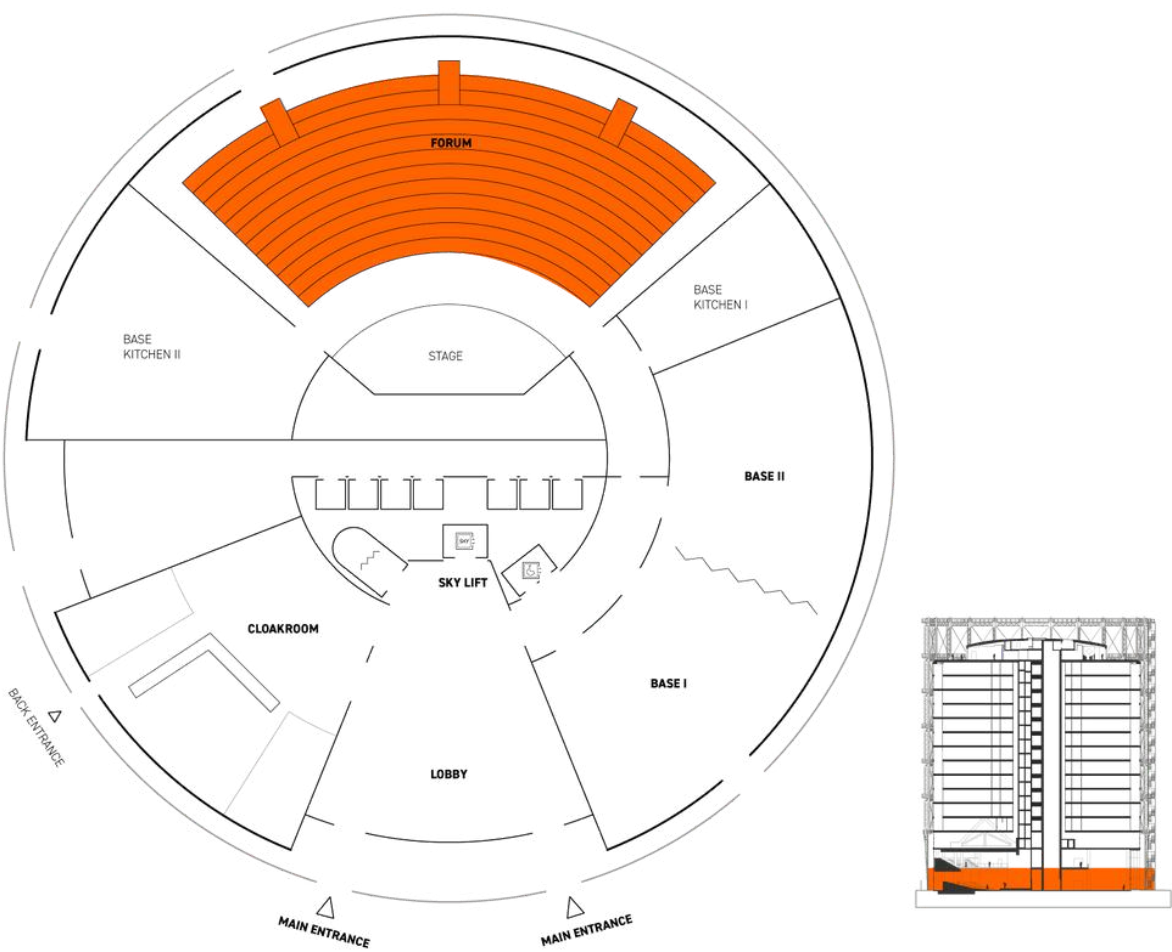
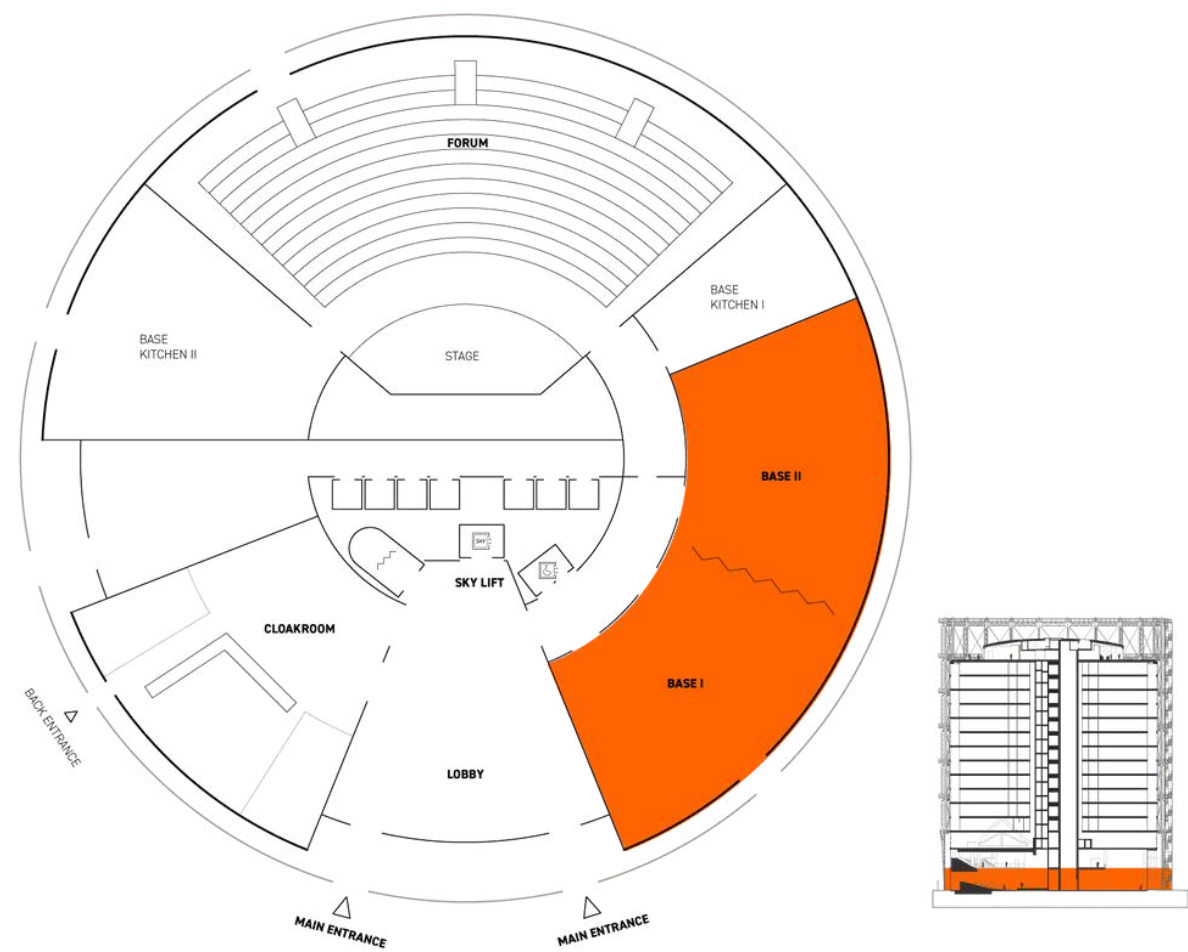


Lobby: 240 sqm

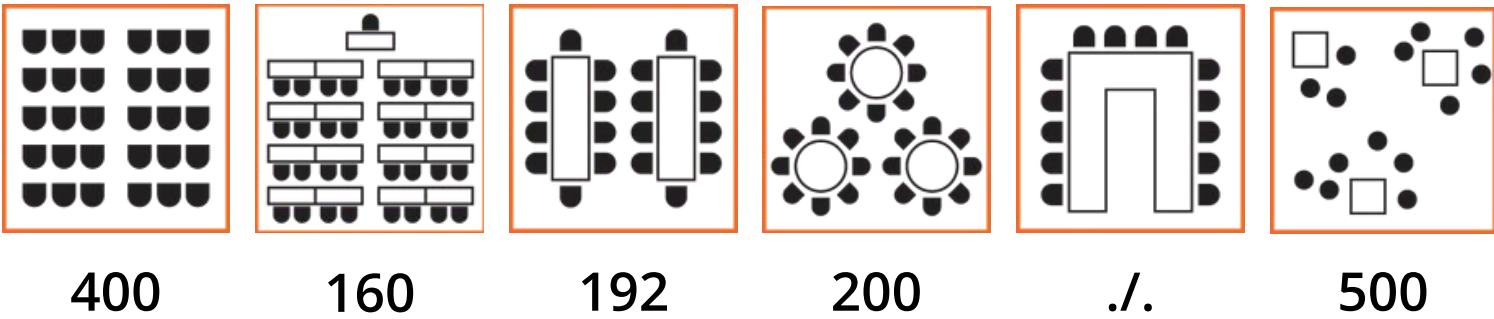
Cloakroom: 125 sqm

FLOOR PLANS & AREAS

GF

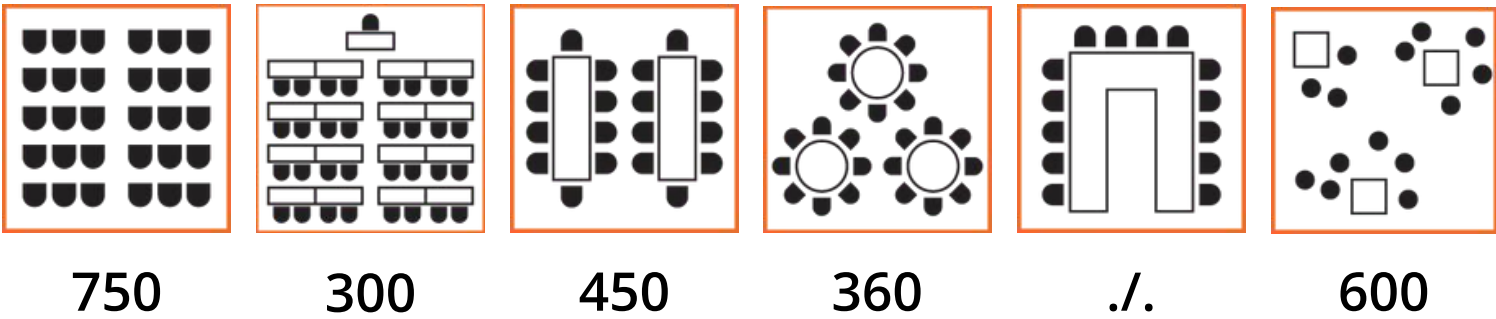


BASE I & II: 450 sqm (each 225 sqm)



Information refers to total area, BASE I & II can also be used separately

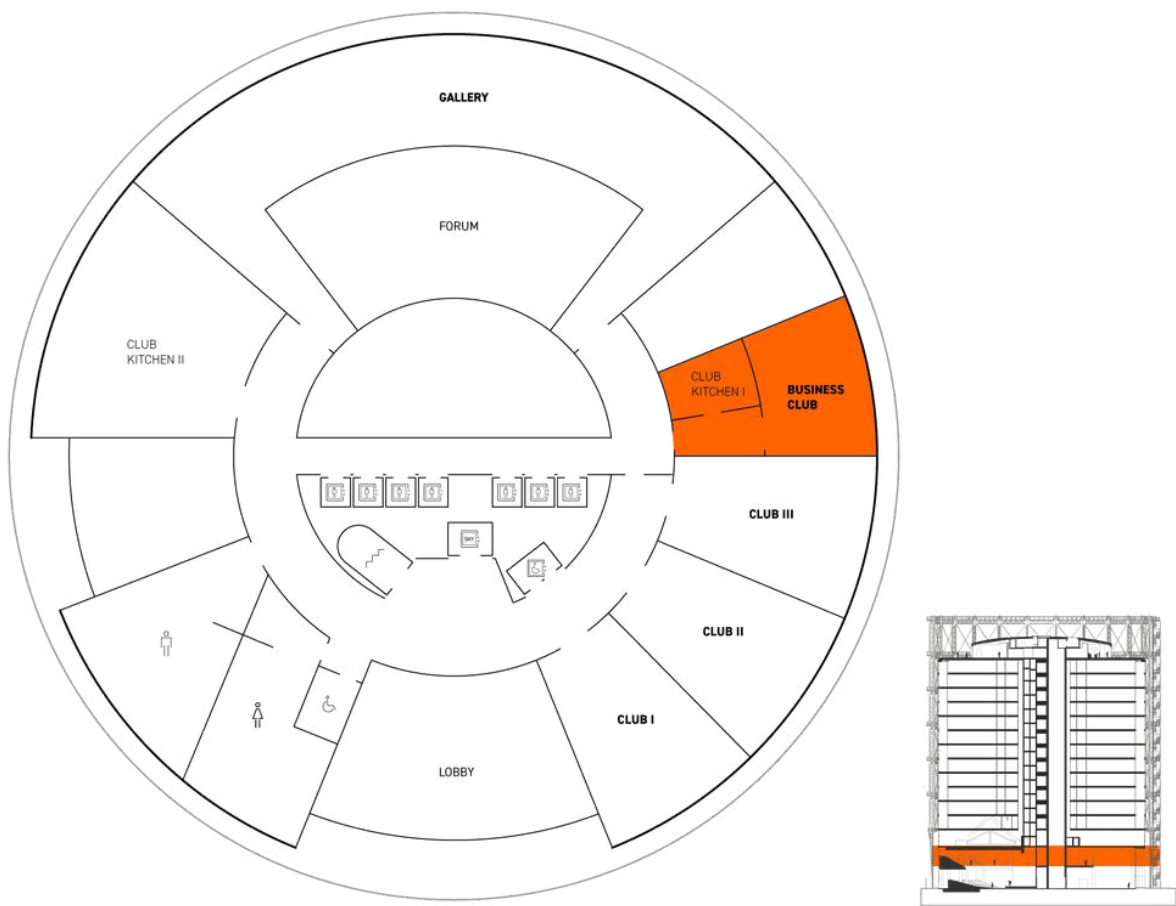
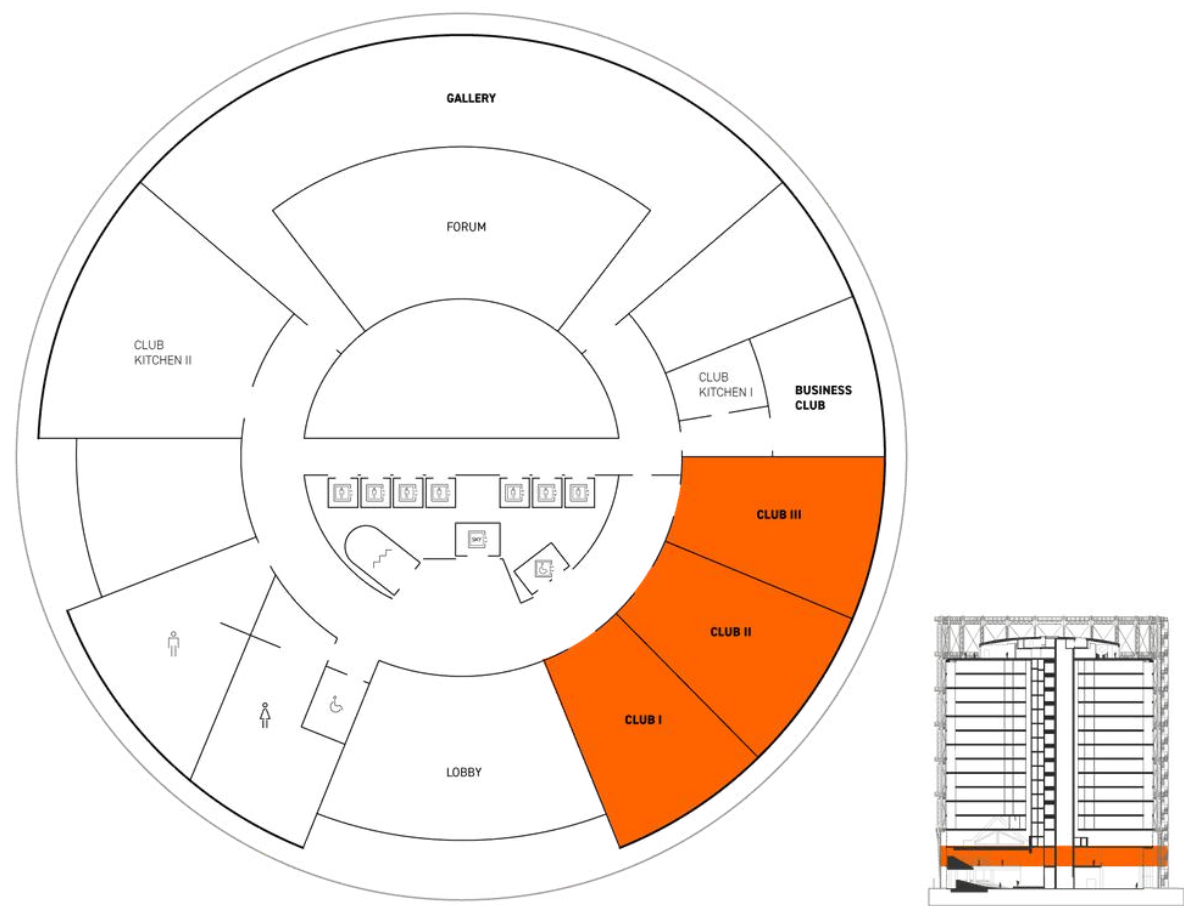
FORUM: 725 sqm (plus 390 sqm GALLERY in 1st floor)



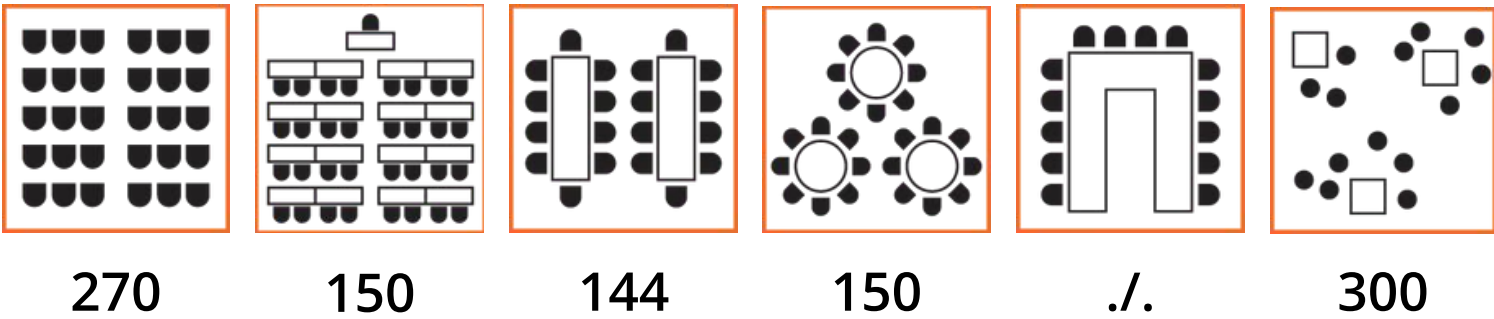
FORUM & GALLERY total: 1,115 sqm & max. 980 seats in a row

FLOOR PLANS & AREAS

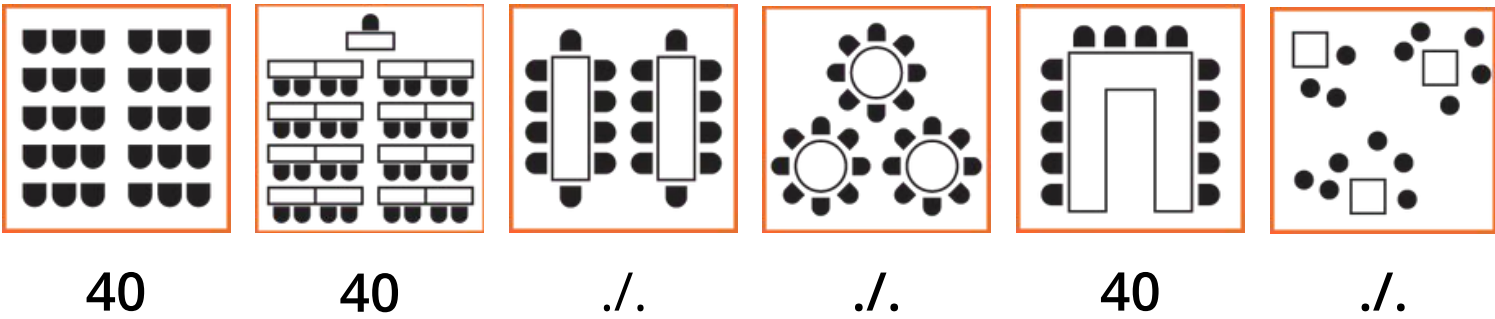
1. FL



CLUB I - III: 324 sqm (108 sqm, 109 sqm, 104 sqm)

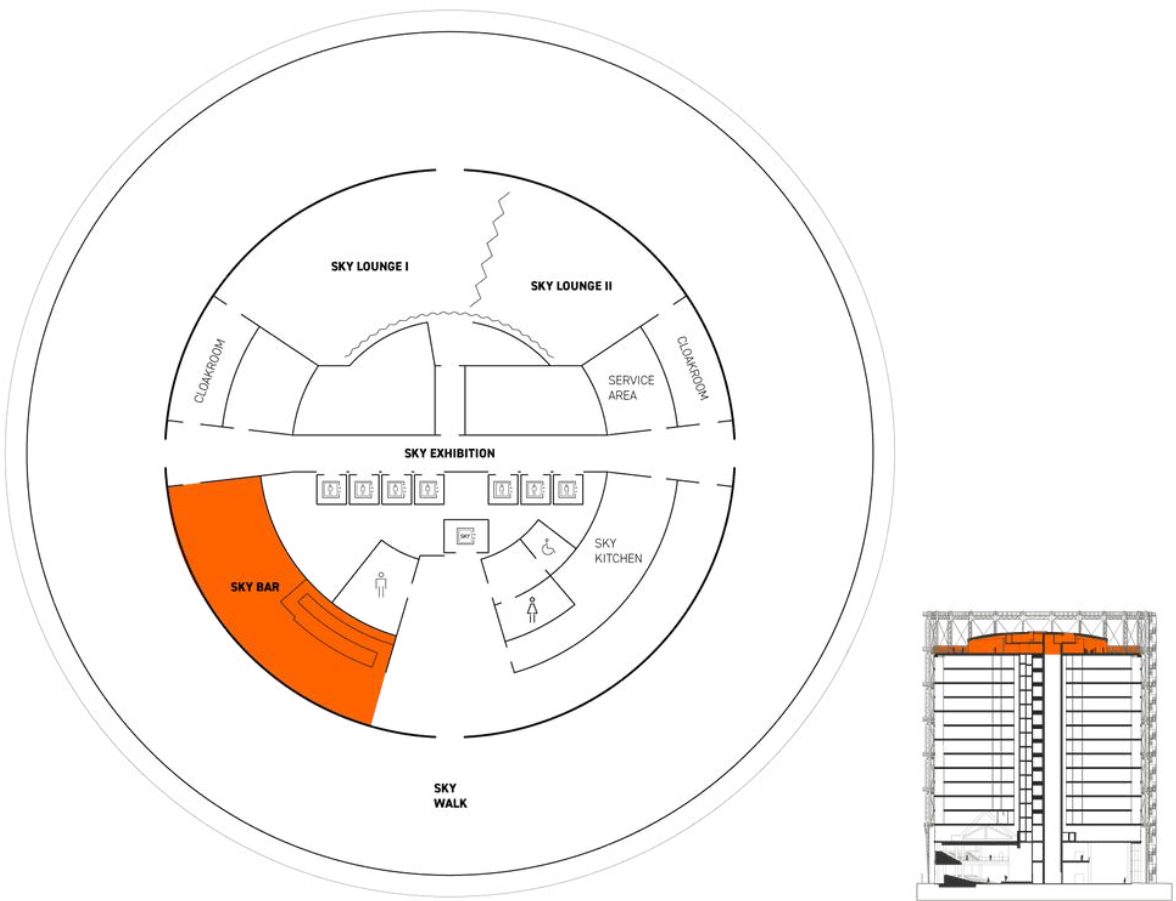
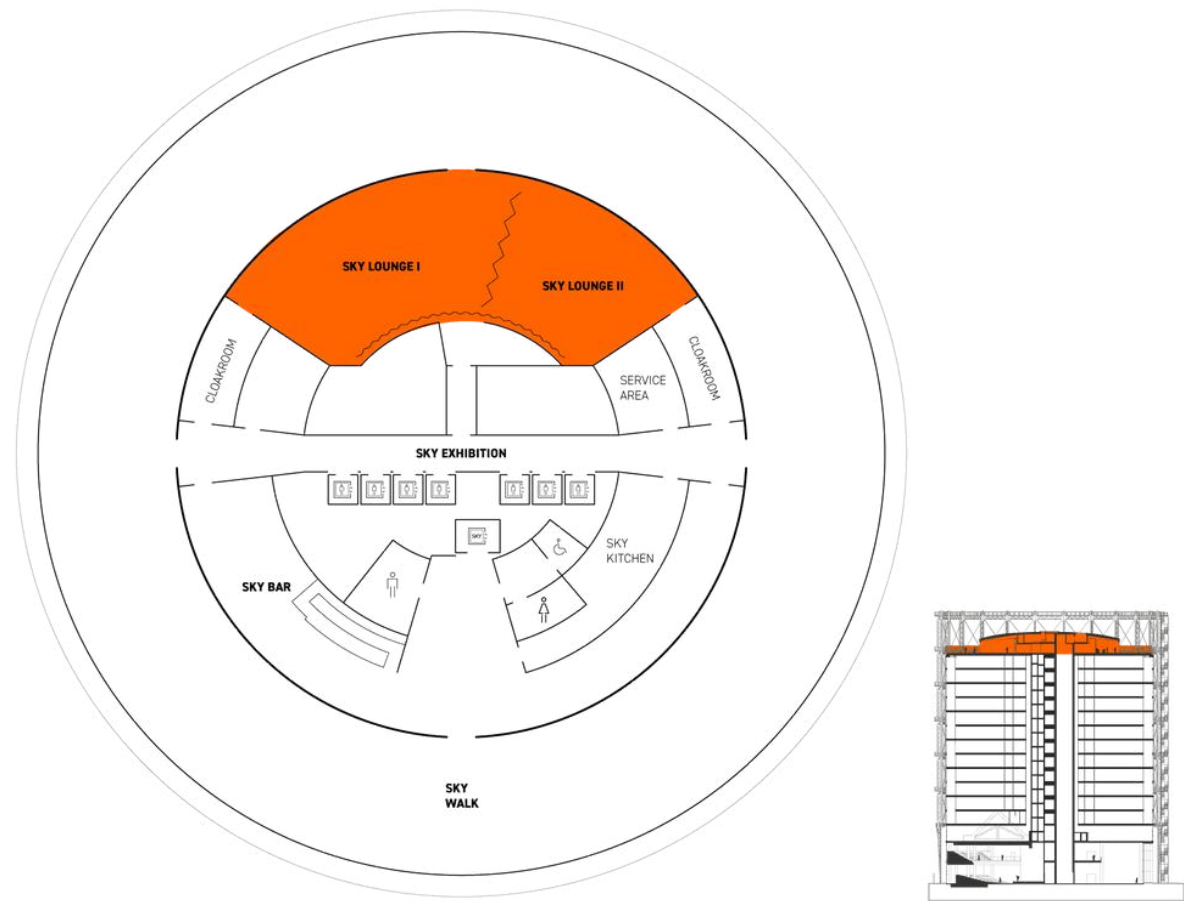


BUSINESS CLUB: 65 sqm

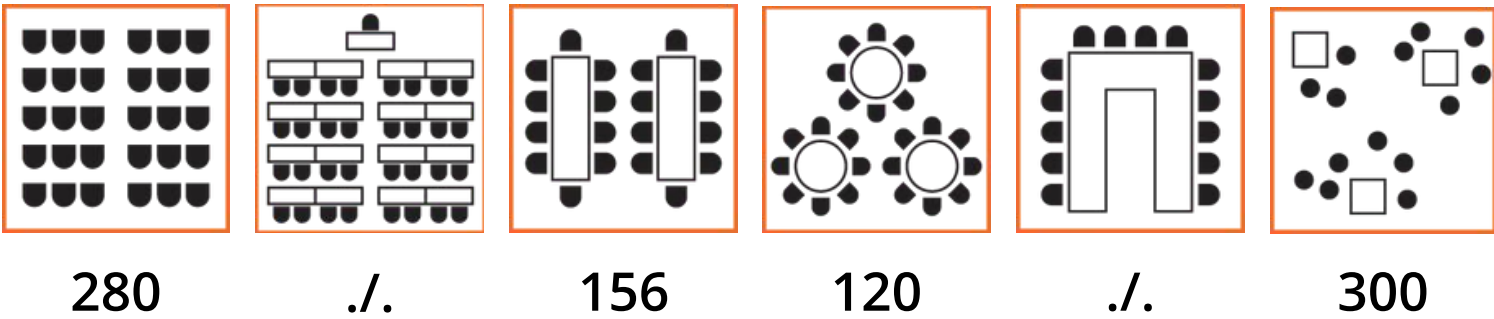


Information refers to total area, CLUB I - III can also be used separately

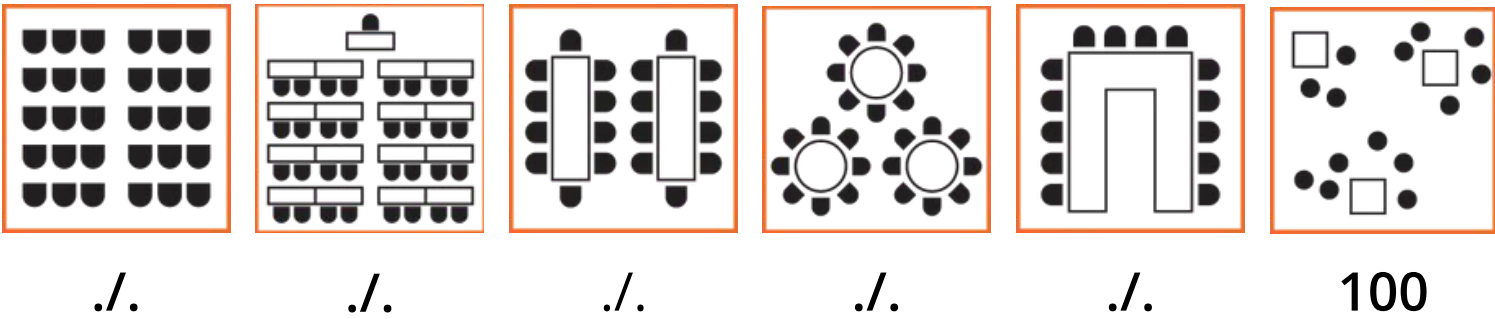
FLOOR PLANS & AREAS



SKY LOUNGE I & II: 275 sqm (165 sqm & 110 sqm)



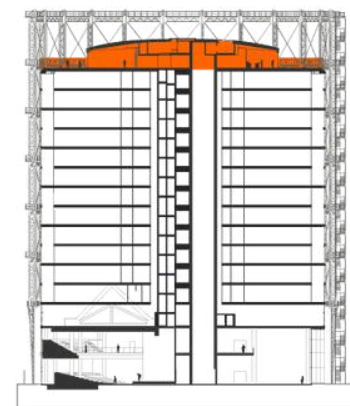
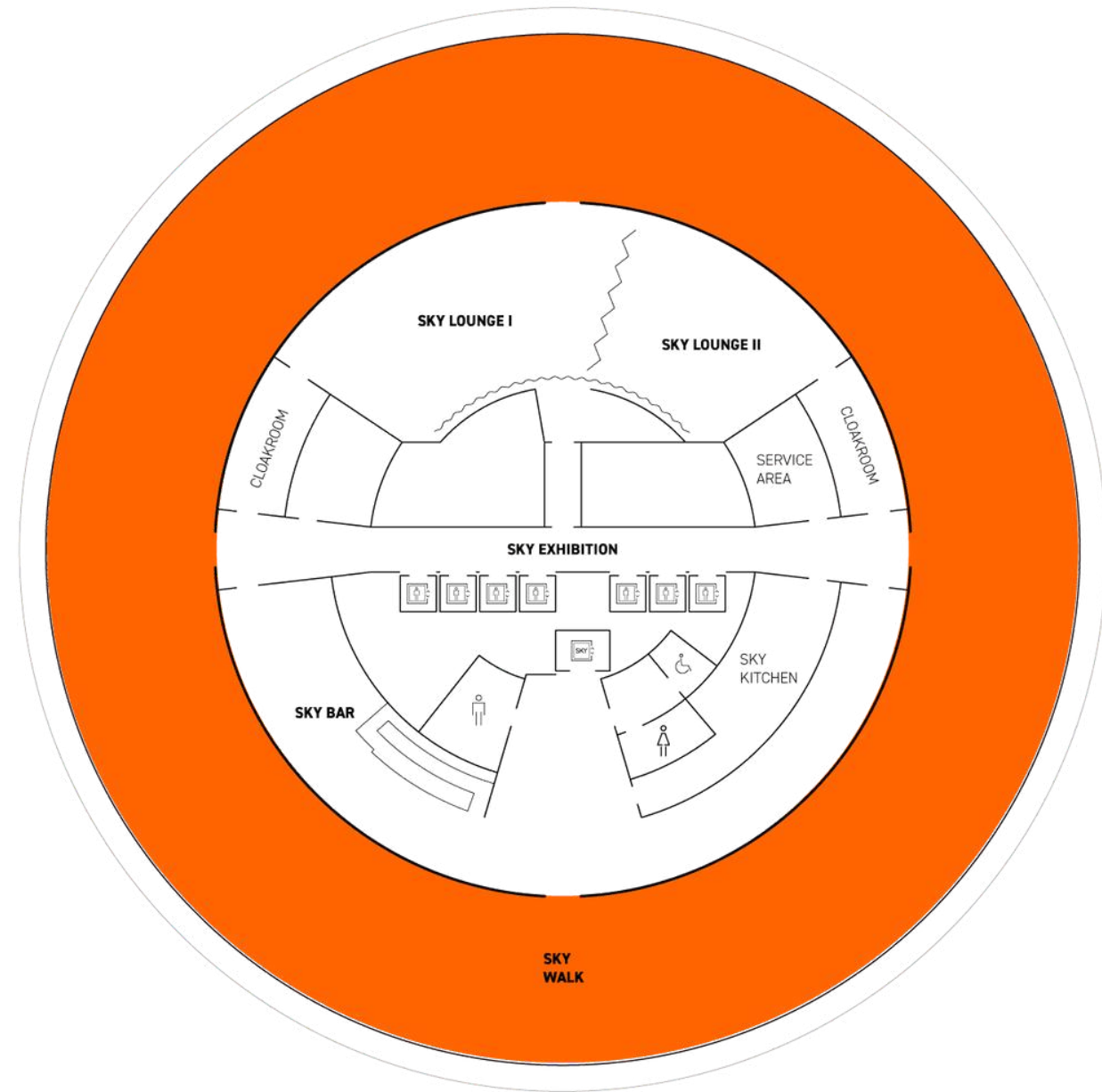
SKY BAR: 65 sqm



Information refers to total area, SKY LOUNGE I & II can also be used separately

FLOOR PLANS & AREAS

SKY



SKY WALK: 740 sqm

ONE-STOP-SHOP

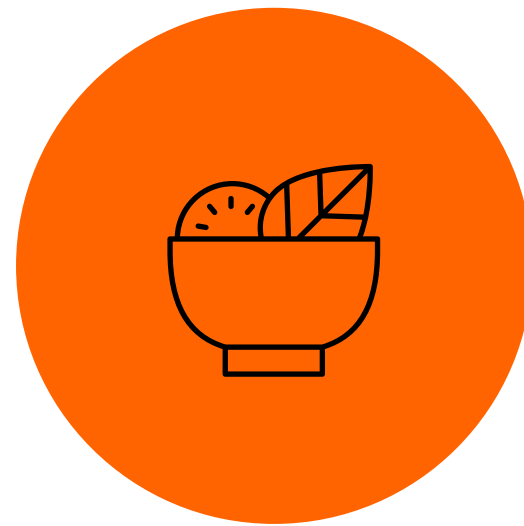
EVERYTHING FROM A SINGLE SOURCE

With tailor-made event solutions, excellent catering and sustainable standards, we create experiences that shape the future. As a one-stop-shop, we bring our expertise together and ensure that your event runs smoothly.



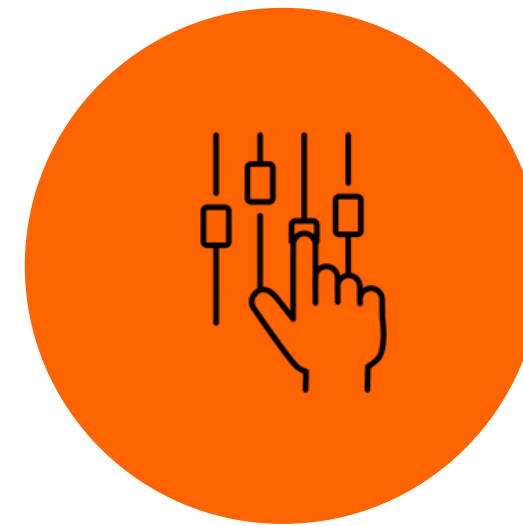
LOCATIONS

Symbiosis of old and new:
heritage-protected
buildings meet modern
green buildings



CATERING

Seasonal, regional, sustainable
- with a special focus on
vegetarian and vegan diversity



TECHNOLOGY

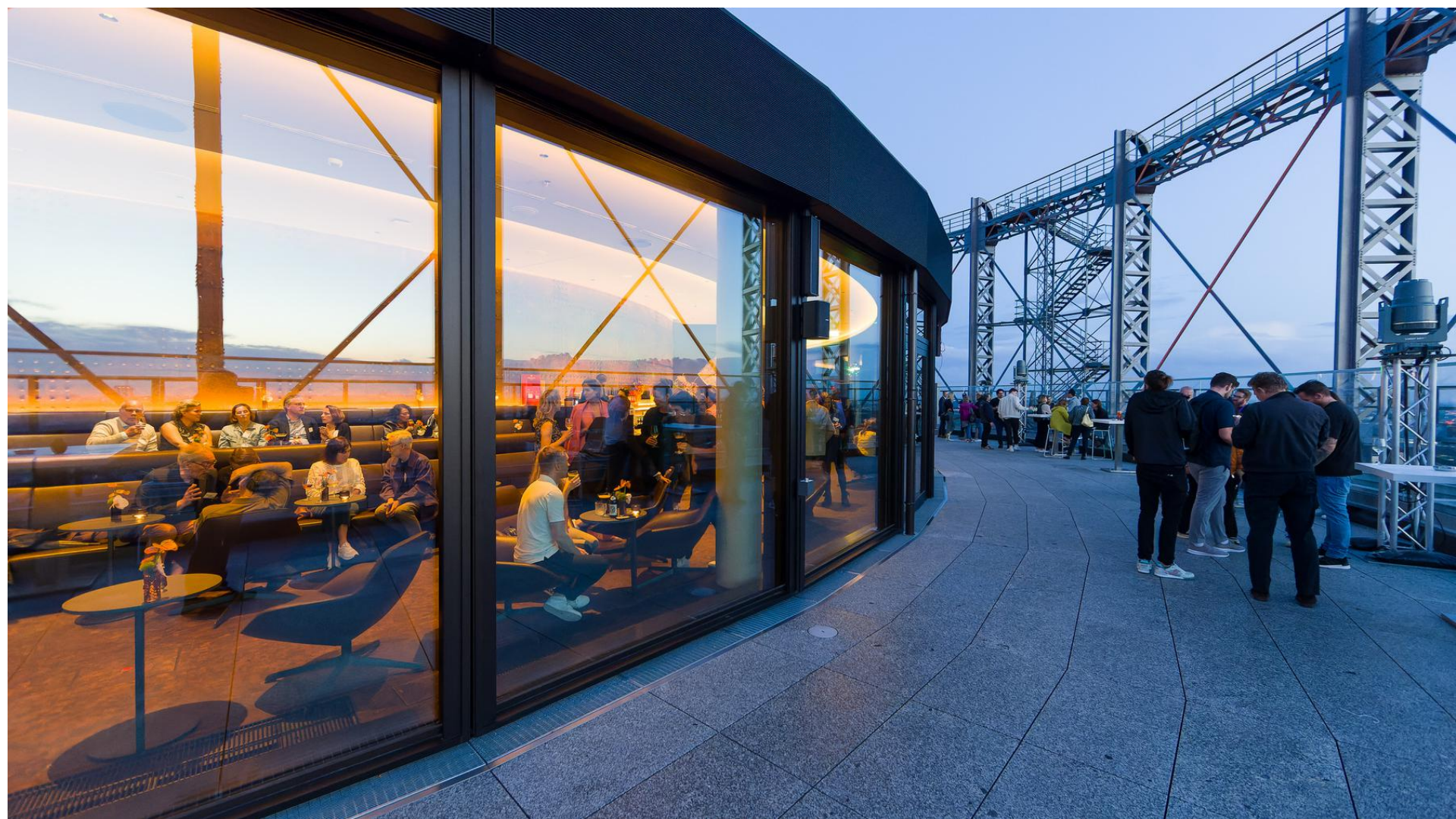
State-of-the-art technology
with CO₂-neutral energy and
smart lighting systems



COMMUNITY

Added value through our
active community in the
areas of mobility, energy
and climate protection






CONTACT

INTERESTED?

We look forward to your inquiry!

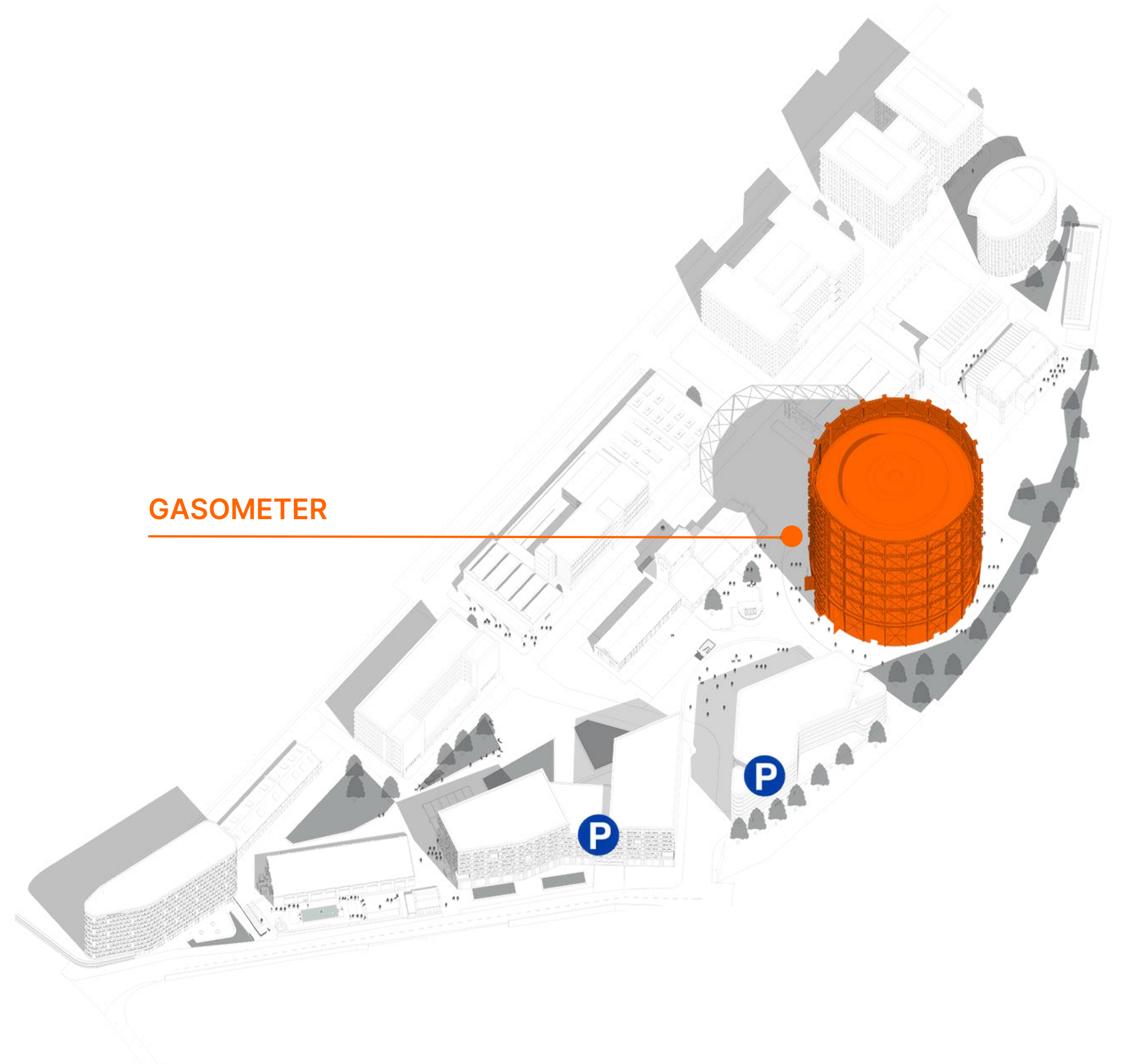
Arrange a viewing appointment or send us your specific inquiry!

 mail@locations.euref.de

 +49 30 264 767-24

 www.euref-event.de/en

GASOMETER



Photocredits:
Christian Kruppa